



Nestled in the delightful area of Lowden, Chippenham, this charming terraced house presents an excellent opportunity for those seeking a comfortable and convenient home. The property boasts two well-proportioned bedrooms, making it ideal for families or professionals looking for extra space.

Upon entering, you are welcomed into a cosy reception room that is both inviting and functional, perfect for relaxation or entertaining guests. The kitchen and dining area provide a lovely space for family meals and gatherings, while the bathroom is conveniently located to serve the household's needs.

One of the standout features of this home is the attic space, which offers a fantastic opportunity for a workspace or additional storage, catering to the modern lifestyle. The property is equipped with UPVC double glazing and gas central heating, ensuring warmth and comfort throughout the year.

Viewing

Viewings Strictly by appointment with the sole selling agents Atwell Martin call or e-mail us today to confirm your appointment | 65 New Road, Chippenham, Wiltshire SN15 1ES

Situation - Chippenham

Chippenham has a wide range of amenities to include High Street retailers plus supermarkets and retail parks and, in addition, there is a leisure centre with indoor swimming pool, library, cinema and public parks. Chippenham also benefits from excellent schooling with numerous primary and three highly sought after secondary schools. For those wishing to commute there is also a regular main line rail service from Chippenham station to London (Paddington) and

the West Country and the M4 motorway is easily accessed via Junction 17 a few miles north of the town.

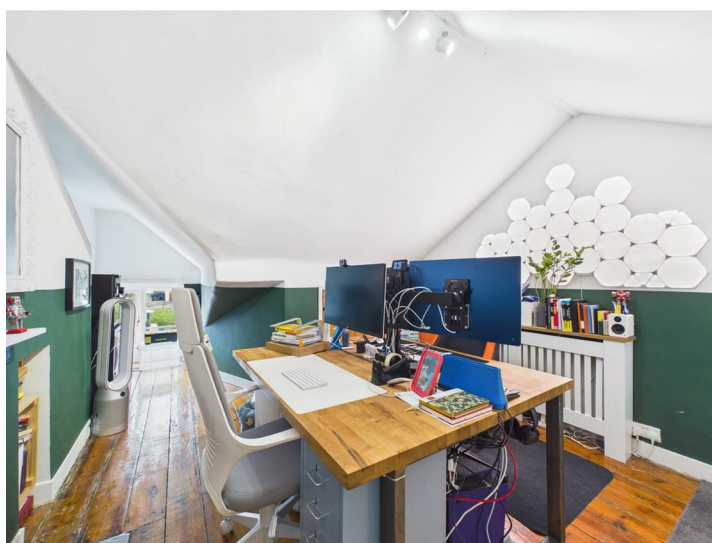
Property Information

Utilities/Services - Mains Electric, Water & Drainage, Gas Central Heating

Wiltshire Council Tax - Band B

Tenure - Freehold







Ground Floor



First Floor



Second Floor



Approximate total area⁽¹⁾

825 ft²
76.7 m²

Reduced headroom

24 ft²
2.3 m²

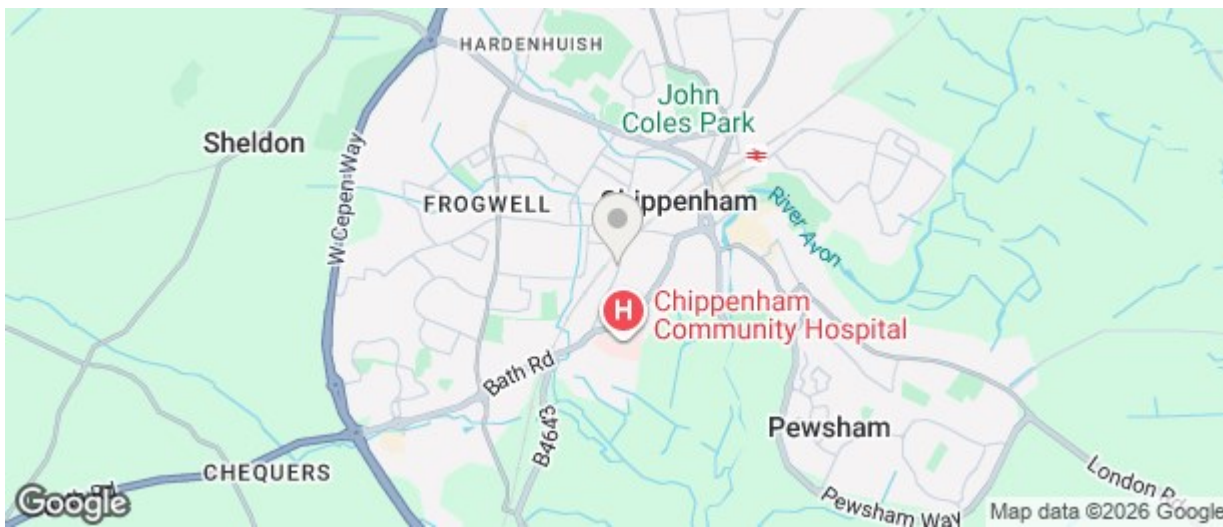
(1) Excluding balconies and terraces

Reduced headroom

..... Below 5 ft/1.5 m

Calculations reference the RICS IPMS 3C standard. Measurements are approximate and not to scale. This floor plan is intended for illustration only.

GIRAFFE 360



Energy Efficiency Rating		
	Current	Potential
Very energy efficient - lower running costs		
(92 plus) A		
(81-91) B		
(69-80) C		
(55-68) D		
(39-54) E		
(21-38) F		
(1-20) G		
Not energy efficient - higher running costs		
60		70
England & Wales EU Directive 2002/91/EC		
Environmental Impact (CO ₂) Rating		
	Current	Potential
Very environmentally friendly - lower CO ₂ emissions		
(92 plus) A		
(81-91) B		
(69-80) C		
(55-68) D		
(39-54) E		
(21-38) F		
(1-38) G		
Not environmentally friendly - higher CO ₂ emissions		
England & Wales EU Directive 2002/91/EC		

The particulars are set out as a general outline only for the guidance of intended purchasers or lessees, and do not constitute, any part of a contract. Nothing in these particulars shall be deemed to be a statement that the property is in good structural condition or otherwise nor that any of the services, appliances, equipment or facilities are in good working order. Purchasers should satisfy themselves of this prior to purchasing